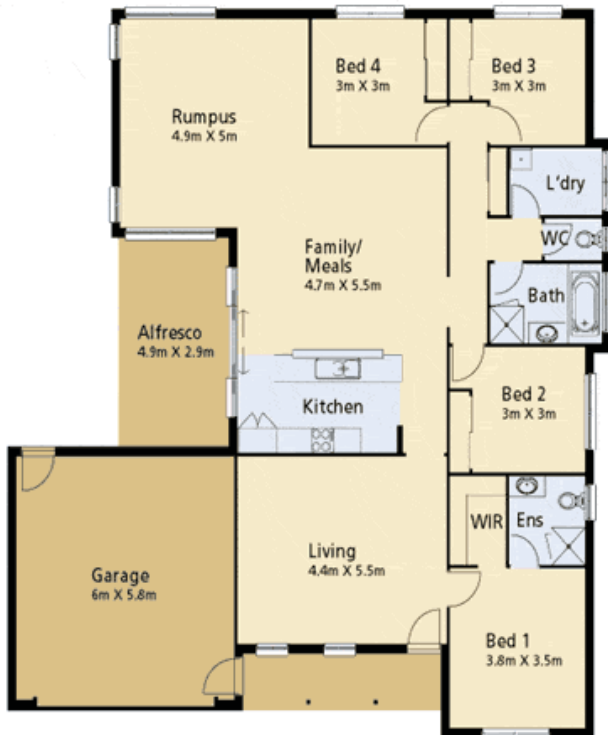


**HOUSE & LAND PACKAGE**  
*Lot 49 Countryview St, Woombye*  
**From \$431,900**



**House Features**

- Separate Living Area + Rumpus
- Carpets + Tiling included
- Remote Control Garage Door
- Under-roof Alfresco
- Exposed Agg. Driveway, Path & Porch\*
- 12,000 Litre Water Tank
- Plus all Premier 09 Inclusions

**Areas**

- House size: 248m<sup>2</sup>
- Lot size: 919m<sup>2</sup>



Once you arrive at Range Brook Estate, you won't want to leave. Take your pick of homesites, selecting from views to the Blackall Ranges, or overlooking the green nature reserve. The magnificent views are matched only by the large beautiful blocks, great value and picture-perfect potential of the Estate. Within 15 minutes, you have most of the conveniences you could ask for - pristine beaches, schools and universities, shopping centres, and the Bruce Highway which will take you north or south. Just around the corner is the historic local township of Woombye. The calm and tranquillity of Range Brook is calling you. Own your slice of hinterland paradise today.

Note: Price does not include timber floors, dishwasher, landscaping or retaining walls. Customer connection fees to power & phone not included. Prices subject to change without notice. Progress payments on construction. Refer to display extras list for optional extras. Not to be used with any other offer. Excludes stamp duty & costs. \*Up to 55sqm.

## **“Orbit House & Land”**

**Lot 49 Countryview Street, Woombye  
House: Waverley 27 - Villa Facade**

### **Includes:**

- Fixed price slab, site costs and Premier 09 Inclusions
- Double lock up garage as per plan with sectional panel lift door
- All connections and BERS included
- Colourbond fascia and quad spouting
- Sliding vinyl bedroom robe doors
- Tiles skirting to all wet area and floor tiles bath, ensuite & toilet
- Flickmixer tap to kitchen
- Double power points
- Dishwasher space
- Telephone connection and 2 points
- Concrete roof tiles 25 degree pitch as per plans, 2400mm ceiling height
- Metro towel rails and toilet paper holders
- Telephone run-in and outlets
- Stylus Minuet link china toilet bowl and cistern
- Irwell metro taps to laundry
- 12,000 litre water tank installed with garden tap and plumbed to toilets
- Cottage can letter box
- Broom finish concrete to Alfresco
- Additional 20mm allowed for driveway paving

### **Move-in Pack Included:**

- Carpet & floor tiles Option A
- Remote control to garage door
- Keyed locks to windows & doors
- \*Driveway, path & porch exposed agg. concrete
- Oyster light fittings to all rooms
- Clothesline
- Upgrade Front Entry Door
- Gainsborough Ti-Lock deadlock
- Gainsborough levere door handles
- Stainless steel laundry trough

**HOUSE      \$196,900**

\*Price does not include timber floors, dishwasher, landscaping, retaining walls \*Customer connection fees to power and telephone not included \*Prices subject to change without notice \*Progress payments on construction \*Refer to Display extras list for optional extras \*Not to be used with any other offer \*Excludes Stamp Duty & Costs \*Up to 55m<sup>2</sup> exposed agg. concrete