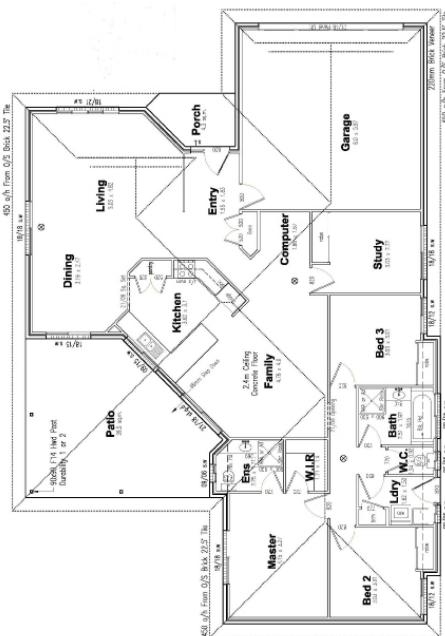




HOUSE & LAND PACKAGE
 Lot 45 Grasstree Crescent
 Gladstone

\$455,500 (reduced from \$498,500)



Key inclusions:

- 4 built in bedrooms + study nook
- Large open plan lounge/dining/kitchen with additional family room
- Large outdoor under-roof patio
- Inclusions: rainwater tank, turf, fencing, letterbox, clothesline, driveway, aircon to living room
- House size: 226.3m²
- Lot size: 635m²



At Emmadale Gardens you'll fall in love with the leafy nature reserve, the lake and its birdlife, the family friendly playground and the winding hike & bike trails that enhance a healthy lifestyle. Just minutes from schools, shops, parks and beaches, Emmadale Gardens is the perfect place to call home. Kirkwood Road is now complete which means residents will enjoy a much reduced travel time to just about anywhere in Gladstone.

There's plenty of room for you and your family to spread out here. This single storey house offers plenty of space for r&r - 4 bedrooms, plus a computer nook, a spacious lounge/dining/kitchen area, together with a separate family room. Imagine spending those lazy weekend afternoons relaxing on the large outdoor under-roof patio. Just a short walk around the end of the street, and you have the bike & hike trails that surround the gorgeous central lake area. Sign up today so you don't miss out.

Plans and illustrations are for marketing purposes – dimensions and colours are provided as a guide only. Whilst every care has been taken in the preparation of this brochure, prospective purchasers should undertake their own enquiries in order to satisfy themselves as to the accuracy of the details. Hotondo Homes reserves the right to alter the plan, specifications, materials, suppliers and price without notice.

P: 1800 776 658
 E: emmadale@imodamarketing.com.au
 W: www.emmadale.com.au
 Sales & Information Office: Koowin Drive, New Auckland

PROUDLY MARKETING BY

